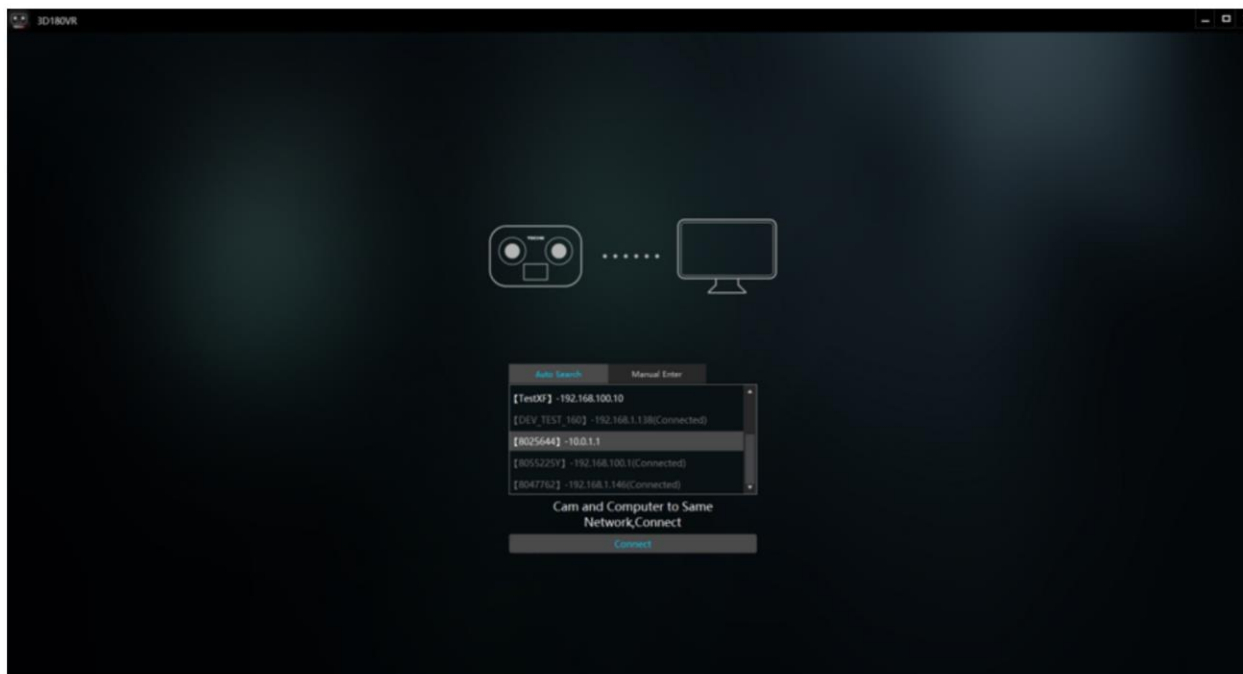


PC Controller Firmware Upgrade Tutorial

Note: During the upgrade process, it is necessary to ensure that the network on the PC side is normal, the camera is turned on and the battery is sufficient.

Ensure that the network and power supply are stable, otherwise it will affect the firmware upgrade.

1. Turn on the controller, select the camera, and click the link to enter the control interface



2. Click the "Help" column on the upper left of the interface and select "Detect Firmware"



3.If the current firmware is less than the latest firmware, click "Upgrade" in the lower right corner to upgrade the firmware.

